



Spring 2020

HIGH TYPE

GENETIC DIRECTORY

INTRODUCTION

Welcome to the new & improved High Type Genetic Directory from Genus ABS. Encompassing the St Jacobs ABC range of sires available in the UK this directory aims to cater for pedigree breeders who want that added style and weight of pedigree in their bull selections.

Complimenting the St Jacobs line up, we have High type sires from the mainstream Genus ABS portfolio that are making a huge name for themselves globally including Proven High Type sire Wilder **DALLIANCE** and Red Icon Sires the likes of SHG **RAINSTORM** & Hoogerhorst DG **OH RUBELS**.

St. Jacobs Business Manager Brian Behnke was visiting customers earlier in the year and has some pleasing comments to make about some of the UK's favourite type sires.

"The first Artist's are due to calve this summer and boy do they look fantastic. These heifers that had tremendous length of frame have continued to develop and now have that great 3 dimensional view, they look great from every angle. They have the depth of rear rib and width to their rumps to grow into impressive cows. Their impressive foot and leg is still nearly perfect with a little flex to the hock and good foot

angle. Some of the very oldest and first pictured daughters of Artist are at Rick Demmer and Families farm in Peosta, Iowa. I had the chance just before the lockdown from Covid-19, to see these in person.

To say I was impressed was an understatement, I went home and started using more."



Daughters of Stone Front Artist

Brenland **DENVER** has been exceptional from day one. He continues to deliver as does his Dam, Brenland Doorman Desirable is now scored EX90 and looks as good as ever! Whilst Denver daughters around the world continue to be 'Big ring winners'.

The first Denver daughters are now freshening in Canada and the US and initial reports have been nothing but pleasing. We are expecting him to be a farmer satisfaction sire for sure.



Brenland Doorman Desirable EX90

Wilder **DALLIANCE** has come charging in with an awesome proof yet again. Being the only bull in the breed to offer over +2.30 UK Type Merit with over +12.0 daughter fertility he is definately going to make the cows that are going to be attractive, long living, profitable members of your herd. Check out some of his daughter pictures on his proof page.

CONTENTS

ADDISON	2
ARTIST	4
DALLIANCE	6
DENVER	8
IMPACT	10
PILEUP	12
FRANCISCO	14
SASSAFRAS	14
SPLENIFEROUS - P	14
CALUMET	15
HARVEST	15
DRAFTER	15
RAINSTORM	16
SHIMMER	16
RUBELS	16

ADDISON*RC HO5553 FARNEAR ARIA ADDISON EWL-ET



Pedigree

- SIRE: MAVERICK CRUSH
- DAM: FARNEAR TBR ARIA ADLER-ET
- MGS: DE-SU BKM MCCUTCHEN 1174-ET
- MGD: MS APPLES ARIA-ET
- MGGS: SCIENTIFIC DESTROY-ET

Real World Data

TransitionRight

★★★

Reg. Name	FARNEAR ARIA ADDISON EWL-ET
UK AI Code	HO5553
NAAB	94HO18820
Reg. Number	003143160110
Ear Tag	
aAa	324
Kappa Casein	AE
Beta Casein	A1/A2
Source	AHDB
Holstein UK	04/2020
Stud	ABS Global



DTR: Lyn-Vale Julieann-Red, Mitchell Coleman & Kestin & Kinley Martin, CA



DTR: R-John Add Raspberry-Red-TW

Production

Dtrs: 0 | Prod Herds: 0

PLI	£126	65% Rel
Milk	+123 Kgs	68% Rel
Fat	+6.3 Kgs	+0.02%
Protein	+0.9 Kgs	-0.04%

Management Traits

Dtr Fert	-0.8	Below Ave
Lifespan	70	Above Ave
DCE	-1.3	Difficult
Maternal CE	0.3	Above Ave
SCC	-29%	Improver
Mastitis	-4	Improver
Lameness	1.9	Improver
DigitalDermatitis	0.4	Improver
CalfSurvival	-0.5	Non-Improver
Temperament	0.41	Above Ave
Milking Speed	0.76	Above Ave
Locomotion	1.42	Above Ave
Body Cond	0.26	Above Ave
Maintenance	28 Kgs	Increased Size
TB Advantage	0.5	
AHI	109	

Recessives and Haplotypes

HH1T, HH2T, HH3T, HH4T, HH5T, HH6T, RC, TC, TD, TL, TN, TV, TY

Conformation

Conf Dtrs: 0 | Conf Herds: 0 | Conf Rel: 56%

	-2	-1	0	1	2	
Type					1.77	Excellent
Mammary					3.23	Excellent
Legs & Feet					1.60	Excellent
Stature					2.83	Tall
Chest Width					0.57	Wide
Body Depth					1.35	Deep
Angularity					0.66	Angular
Rump Angle					0.02	Sloped
Rump Width					2.82	Wide
Rear Legs					0.19	Sickle
Foot Angle					1.41	Steep
Fore Udder					3.60	Strong
Rear Udder					2.81	High
Udder Support					2.17	Strong
Udder Depth					2.91	Shallow
Front Teat PI					2.42	Close
Teat Length					0.32	Long
Rear Teat PI					1.65	Close



94HO18820 Farnear Aria Addison Ewl-ET

ADDISON*RC

{CRUSH x McCutchen x DESTROY*RC x Regiment-Red }

HO 840 3143160110 99% DOB: 3/29/2017

Bred by Adam Simon, Andy Dougherty, Megan Rauen, Farley, IA

Acquired from Addison RC Syndicate, LLC, Brooklyn, IA



DAM: FARNEAR TBR ARIA ADLER-ET*RC EX-94



2ND DAM: MS APPLES ARIA-ET*RC EX-92

sire

MAVERICK CRUSH

dam

FARNEAR TBR ARIA ADLER-ET*RC EX-94

sired by De-Su Bkm McCutchen 1174-ET EX-93

3-11 2x 283d 34,240M 5.1% 1736 Fat 3.2% 1098 Prot

2nd dam

MS APPLES ARIA-ET*RC EX-92 2E

3-10 3x 312d 29,830M 4.8% 1444 Fat 3.4% 1019 Prot

3rd dam

KHW REGIMENT APPLE-RED-ET EX-96 4E 20* DOM

9-01 2x 365 36,750M 4.3% 1582 Fat 3.3% 1211 Prot

Lifetime: 2,898d 240,640M 4.7% 11,394 Fat 3.6% 8,559 Prot

Grand Champion Grand International R&W Show 2011

Unanimous All-American Junior 2-Year-Old 2006

All-American R&W Jr 2-Yr-Old 2006

HHM All-American Jr 3-Yr-Old 2007

Nom All-American R&W 5-Yr-Old 2009

All-American R&W Aged Cow 2011

All-American R&W 125,000lb Cow 2013

Reserve All-American R&W 125,000lb Cow 2014

4th dam

KAMPS-HOLLOW ALTITUDE-ET EX-95 2E 2* DOM

7-00 2x 365 39,690M 4.7% 1849 Fat 3.3% 1310 Prot

Lifetime 1844d 144,460M 4.4% 6295 Fat 3.5% 5015 Prot

5th dam

CLOVER-MIST ALISHA-ET EX-93 3E GMD DOM

8-07 2x 365 36,920M 4.2% 1553 Fat 3.2% 1188 Prot

6th dam

D-R-A AUGUST EX-96 4E DOM

Lifetime: 3443d 190,200M 4.4% 8281 Fat 3.3% 4457 Prot

Nominated All-American Aged Cow 1986

ADDISON *RC is an exciting new bull from the Apple family. His six Excellent dams average 94 points! As his heritage suggests, this bull can make winners in red or black! As you might expect he carries huge type numbers, but also backs them up with big components!

**Breeder's
Choice**



We've got your choices covered!

ABS Global, Inc. • www.absglobal.com • www.stjacobsabc.com • 1-800-ABS-STUD

ARTIST H05203 STONE-FRONT ARTIST-ET



Pedigree

- SIRE: MAVERICK CRUSH
- DAM: TJR ARIETA MCCUT 2256-ET
- MGS: DE-SU BKM MCCUTCHEN 1174-ET
- MGD: MS ARIEL MOMAN ARITA-ET
- MGGS: LONG-LANGS OMAN OMAN-ET

Real World Data

TransitionRight



Reg. Name	STONE-FRONT ARTIST-ET
UK AI Code	H05203
NAAB	94H018700
Reg. Number	003136876946
Ear Tag	
aAa	324
Kappa Casein	AE
Beta Casein	A1/A2
Source	AHDB
Holstein UK	04/2020
Stud	ABS Global



DTR: GPH Artist Gaja Artist Granddaughter of Galys Vray



DTR: NH Artist Ballerina Artist Granddaughter of Butz-Butler Gold Barbara

Production

Dtrs: 0 | Prod Herds: 0

PLI	£210	65% Rel
Milk	+329 Kgs	68% Rel
Fat	+9.7 Kgs	-0.04%
Protein	+9.5 Kgs	-0.02%

Management Traits

Dtr Fert	1.2	Above Ave
Lifespan	48	Above Ave
DCE	-0.9	Difficult
Maternal CE	0.4	Above Ave
SCC	-30%	Improver
Mastitis	-3	Improver
Lameness	1.2	Improver
DigitalDermatitis	0.2	Improver
CalfSurvival	0.4	Improver
Temperament	0.76	Above Ave
Milking Speed	0.58	Above Ave
Locomotion	0.90	Above Ave
Body Cond	-1.09	Below Ave
Maintenance	28 Kgs	Increased Size
TB Advantage	1.2	
AHI	104	

Recessives and Haplotypes

HH1T, HH2T, HH3T, HH4T, HH5T, HH6T, TC, TD, TL, TN, TR, TV, TY

Conformation

Conf Dtrs: 0 | Conf Herds: 0 | Conf Rel: 56%

	-2	-1	0	1	2	
Type					1.46	Excellent
Mammary					2.53	Excellent
Legs & Feet					1.11	Excellent
Stature					3.18	Tall
Chest Width					0.53	Wide
Body Depth					2.25	Deep
Angularity					2.19	Angular
Rump Angle					0.09	Sloped
Rump Width					2.67	Wide
Rear Legs					0.46	Sickle
Foot Angle					0.89	Steep
Fore Udder					2.69	Strong
Rear Udder					2.02	High
Udder Support					2.17	Strong
Udder Depth					2.14	Shallow
Front Teat PI					1.31	Close
Teat Length					-0.48	Short
Rear Teat PI					1.38	Close

Artist

94HO18700

STONE-FRONT ARTIST-ET 99%

FROM THE ADEEN FAMILY

CRUSH X EX-94 MCCUTCHEN X EX-92 MAN-O-MAN X EX-92 GOLDWYN
X EX-92 DURHAM X VG-88 STORM X EX-94 SKYCHIEF X EX-94 STARBUCK

Start Your Collection today!



Artist Daughters
LE-O-LA ARTIST AUBREE-ET | LE-O-LA ARTIST AVA-ET | LE-O-LA ARTIST LEXIS-ET
Le-O-La Holsteins, Peosta, IA

Type without compromise!

Available in Sexcel® Sexed Genetics!



ABS GLOBAL, INC. • WWW.ABSGLOBAL.COM • WWW.STJACOBSABC.COM • 1-800-ABS-STUD

Pedigree

- **SIRE:** SEAGULL-BAY SILVER-ET
- **DAM:** WILDER DARK
- **MGS:** AMIGHETTI NUMERO UNO-ET
- **MGD:** ZBW-SHD DOMAIN DAZZLE-ET
- **MGGS:** RONELEE TOYSTORY DOMAIN-ET

Real World Data

TransitionRight

★★★★

Reg. Name	WILDER DALLIANCE
UK AI Code	H04247
NAAB	29H017335
Reg. Number	000538894941
Ear Tag	DE0538894941
aAa	423
Kappa Casein	AB
Beta Casein	A1/A2
Source	Interbull
Holstein UK	04/2020
Stud	ABS Global



DAU: Lillyhall Dalliance Bonita-2yrs, VG86



DAU: Dalliance daughters at Willenhall Holsteins

Production

Dtrs: 445 | Prod Herds: 165

PLI	£404	92% Rel
Milk	+283 Kgs	98% Rel
Fat	+15.4 Kgs	+0.05%
Protein	+14.8 Kgs	+0.06%

Management Traits

Dtr Fert	12.1	Above Ave
Lifespan	73	Above Ave
DCE	-1.2	Difficult
Maternal CE	1.3	Above Ave
SCC	-4%	Improver
Mastitis	0	Non-Improver
Lameness	0.9	Improver
DigitalDermatitis	-0.0	Non-Improver
CalfSurvival	1.5	Improver
Temperament	1.35	Above Ave
Milking Speed	1.31	Above Ave
Locomotion	2.52	Above Ave
Body Cond	0.10	Above Ave
Maintenance	19 Kgs	Increased Size
TB Advantage	0.7	
AHI	106	

Recessives and Haplotypes

HH1T, HH2T, HH3T, HH4T, HH5T, HH6T, TC, TD, TL, TN, TV, TY

Conformation

Conf Dtrs: 219 | Conf Herds: 108 | Conf Rel: 92%

	-2	-1	0	1	2		
Type						2.32	Excellent
Mammary						2.87	Excellent
Legs & Feet						2.49	Excellent
Stature						1.76	Tall
Chest Width						0.59	Wide
Body Depth						0.01	Deep
Angularity						0.42	Angular
Rump Angle						0.79	Sloped
Rump Width						1.19	Wide
Rear Legs						0.28	Sickle
Foot Angle						0.89	Steep
Fore Udder						2.57	Strong
Rear Udder						2.28	High
Udder Support						2.79	Strong
Udder Depth						2.85	Shallow
Front Teat PI						2.69	Close
Teat Length						0.54	Long
Rear Teat PI						2.43	Close

DALLIANCE HO4247 WILDER DALLIANCE



Pedigree

- **SIRE:** STANTONS HIGH OCTANE-ET
- **DAM:** BRENLAND DOORMAN DESIRABLE-ET
- **MGS:** VAL-BISSON DOORMAN-ET
- **MGD:** CO-VISTA ATWOOD DESIRE-ET
- **MGGS:** MAPLE-DOWNS-I G W ATWOOD-ET

Real World Data

TransitionRight



Reg. Name	BRENLAND DENVER
UK AI Code	H04992
NAAB	94H018518
Reg. Number	000012074893
Ear Tag	433
aAa	324
Kappa Casein	AA
Beta Casein	A1/A2
Source	AHDB
Holstein UK	04/2020
Stud	ABS Global



DAU: Knowlesmere Denver Courtney-14mths

Production

Dtrs: 0 | Prod Herds: 0

PLI	£138	66% Rel
Milk	+522 Kgs	69% Rel
Fat	+16.4 Kgs	-0.05%
Protein	+14.2 Kgs	-0.03%

Management Traits

Dtr Fert	-7.7	Below Ave
Lifespan	48	Above Ave
DCE	-2.0	Difficult
Maternal CE	0.2	Above Ave
SCC	-14%	Improver
Mastitis	-1	Improver
Lameness	0.1	Improver
DigitalDermatitis	-0.0	Non-Improver
CalfSurvival	1.0	Improver
Temperament	1.28	Above Ave
Milking Speed	0.70	Above Ave
Locomotion	0.88	Above Ave
Body Cond	-0.85	Below Ave
Maintenance	33 Kgs	Increased Size
TB Advantage	3.6	
AHI	100	

Recessives and Haplotypes

HH1T, HH2T, HH3T, HH4T, HH5T, HH6T, TC, TD, TL, TN, TR, TV, TY

Conformation

Conf Dtrs: 0 | Conf Herds: 0 | Conf Rel: 58%

	-2	-1	0	1	2		
Type				<div></div>	1.20	Excellent	
Mammary				<div></div>	2.40	Excellent	
Legs & Feet				<div></div>	0.92	Excellent	
Stature				<div></div>	3.37	Tall	
Chest Width				<div></div>	0.89	Wide	
Body Depth				<div></div>	2.18	Deep	
Angularity				<div></div>	1.95	Angular	
Rump Angle			<div></div>		-0.63	High	
Rump Width				<div></div>	3.32	Wide	
Rear Legs			<div></div>		0.41	Sickle	
Foot Angle			<div></div>		0.65	Steep	
Fore Udder				<div></div>	2.31	Strong	
Rear Udder				<div></div>	3.04	High	
Udder Support				<div></div>	2.42	Strong	
Udder Depth				<div></div>	2.25	Shallow	
Front Teat PI			<div></div>		0.12	Close	
Teat Length			<div></div>		-0.21	Short	
Rear Teat PI			<div></div>		0.84	Close	

Denver

94HO18518

Brenland Denver 99%

High Octane X VG-88 Doorman X
EX-90 G W Atwood X EX-91 SHOTTLE
X EX-92 Durham X 6 More EX Roxies!

#winnerscircle
MAKING FANCY SHOW CALVES



daughter

ZIEMS DENVER EXCITEMENT

1st Fall Calf Northeast Spring National
Timothy & Leah Ziemba & Barbara Ziemba, WI

©2019 Images © Cybil Fisher



Type without compromise!

ABS GLOBAL, INC. • WWW.ABSGLOBAL.COM • WWW.STJACOBSABC.COM • 1-800-ABS-STUD

Sexcel

**Breeder's
Choice**

Pedigree

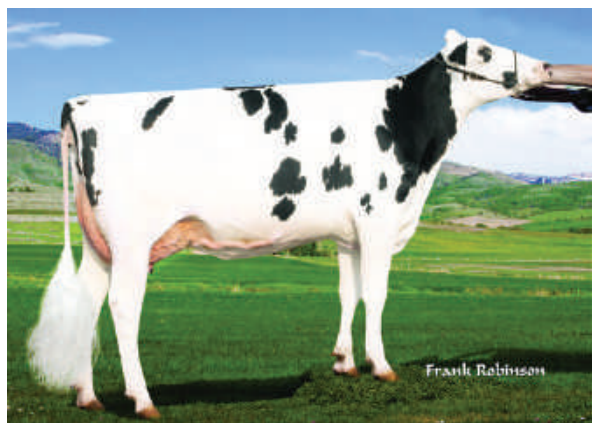
- SIRE: SILVERRIDGE V IMAX-ET
- DAM: MAVERICK SL GAL 23335-ET
- MGS: SEAGULL-BAY SILVER-ET
- MGD: MS MAVRCK CLNG GAL 57555-ET
- MGGS: DE-SU FREDDIE GALAXY-ET

Real World Data

TransitionRight



Reg. Name	AARDEMA IMPACT-ET
UK AI Code	H05922
NAAB	94H019084
Reg. Number	003148279446
Ear Tag	
aAa	234
Kappa Casein	AB
Beta Casein	A1/A2
Source	AHDB
Holstein UK	04/2020
Stud	ABS Global



DAM: Maverick Sl Gal 23335-ET EX-90



6th DAM: Pine Shelter Cheyenne EX95

Production

Dtrs: 0 | Prod Herds: 0

PLI	£415	64% Rel
Milk	+834 Kgs	68% Rel
Fat	+28.9 Kgs	-0.05%
Protein	+25.1 Kgs	-0.03%

Management Traits

Dtr Fert	-0.2	Below Ave
Lifespan	61	Above Ave
DCE	-0.9	Difficult
Maternal CE	0.9	Above Ave
SCC	-4%	Improver
Mastitis	1	Non-Improver
Lameness	1.3	Improver
DigitalDermatitis	0.3	Improver
CalfSurvival	0.9	Improver
Temperament	0.94	Above Ave
Milking Speed	1.58	Above Ave
Locomotion	2.25	Above Ave
Body Cond	-0.04	Below Ave
Maintenance	19 Kgs	Increased Size
TB Advantage	0.9	
AHI	99	

Recessives and Haplotypes

HH1T, HH2T, HH3T, HH4T, HH5T, HH6T, TC, TD, TL, TN, TR, TS, TV, TY

Conformation

Conf Dtrs: 0 | Conf Herds: 0 | Conf Rel: 55%

	-2	-1	0	1	2	
Type					2.42	Excellent
Mammary					2.72	Excellent
Legs & Feet					1.98	Excellent
Stature					1.76	Tall
Chest Width					0.97	Wide
Body Depth					0.66	Deep
Angularity					1.55	Angular
Rump Angle					-0.58	High
Rump Width					1.51	Wide
Rear Legs					-0.05	Straight
Foot Angle					1.04	Steep
Fore Udder					2.37	Strong
Rear Udder					2.45	High
Udder Support					1.38	Strong
Udder Depth					2.21	Shallow
Front Teat PI					1.20	Close
Teat Length					0.47	Long
Rear Teat PI					1.13	Close

Impact

94HO19084

Aardema Impact-ET 99%

Imax X VG-87 SILVER X
VG-85 Galaxy X VG-85 Numero Uno
X VG-87 GW Atwood X VG-86 SHOTTLE
X EX-95 Pine-Shelter Cheyenne

This new release sire from the same family as CRUSH offers +1300 Milk with a +3.55 Udder Composite and plus components. Add solid health and fertility traits and he's ready to make his mark in your herd.

Available soon near you!



his dam

MAVERICK SL GAL 23335-ET

Very Good -87

© 2019 Image © Frank Robinson



Type without compromise!

ABS GLOBAL, INC. • WWW.ABSGLOBAL.COM • WWW.STJACOBSABC.COM • 1-800-ABS-STUD

**Breeder's
Choice**

PILEUP H05881 CALORI-D CS CRUSH PILEUP-ET



Pedigree

- SIRE: MAVERICK CRUSH
- DAM: CALORI-D CL BEEMER PISCH-ET
- MGS: POL BUTTE MC BEEMER-ET
- MGD: RUANN GOLD C POSCH-22563-ET
- MGGS: MR CHASSITY GOLD CHIP-ET

Real World Data

TransitionRight



Reg. Name	CALORI-D CS CRUSH PILEUP-ET
UK AI Code	H05881
NAAB	94H018942
Reg. Number	003144509332
Ear Tag	
aAa	231
Kappa Casein	AB
Beta Casein	A2/A2
Source	AHDB
Holstein UK	04/2020
Stud	ABS Global



DAM: Calori-D Cl Beemer Pisch-ET EX-90



Calori-D CS Crush Pileup

Production

Dtrs: 0 | Prod Herds: 0

PLI	£50	65% Rel
Milk	+102 Kgs	68% Rel
Fat	-4.3 Kgs	-0.10%
Protein	+5.9 Kgs	+0.03%

Management Traits

Dtr Fert	-3.5	Below Ave
Lifespan	18	Above Ave
DCE	-0.9	Difficult
Maternal CE	0.5	Above Ave
SCC	-20%	Improver
Mastitis	-1	Improver
Lameness	0.9	Improver
DigitalDermatitis	0.4	Improver
CalfSurvival	0.4	Improver
Temperament	1.07	Above Ave
Milking Speed	1.68	Above Ave
Locomotion	1.70	Above Ave
Body Cond	-1.16	Below Ave
Maintenance	24 Kgs	Increased Size
TB Advantage	0.7	
AHI	97	

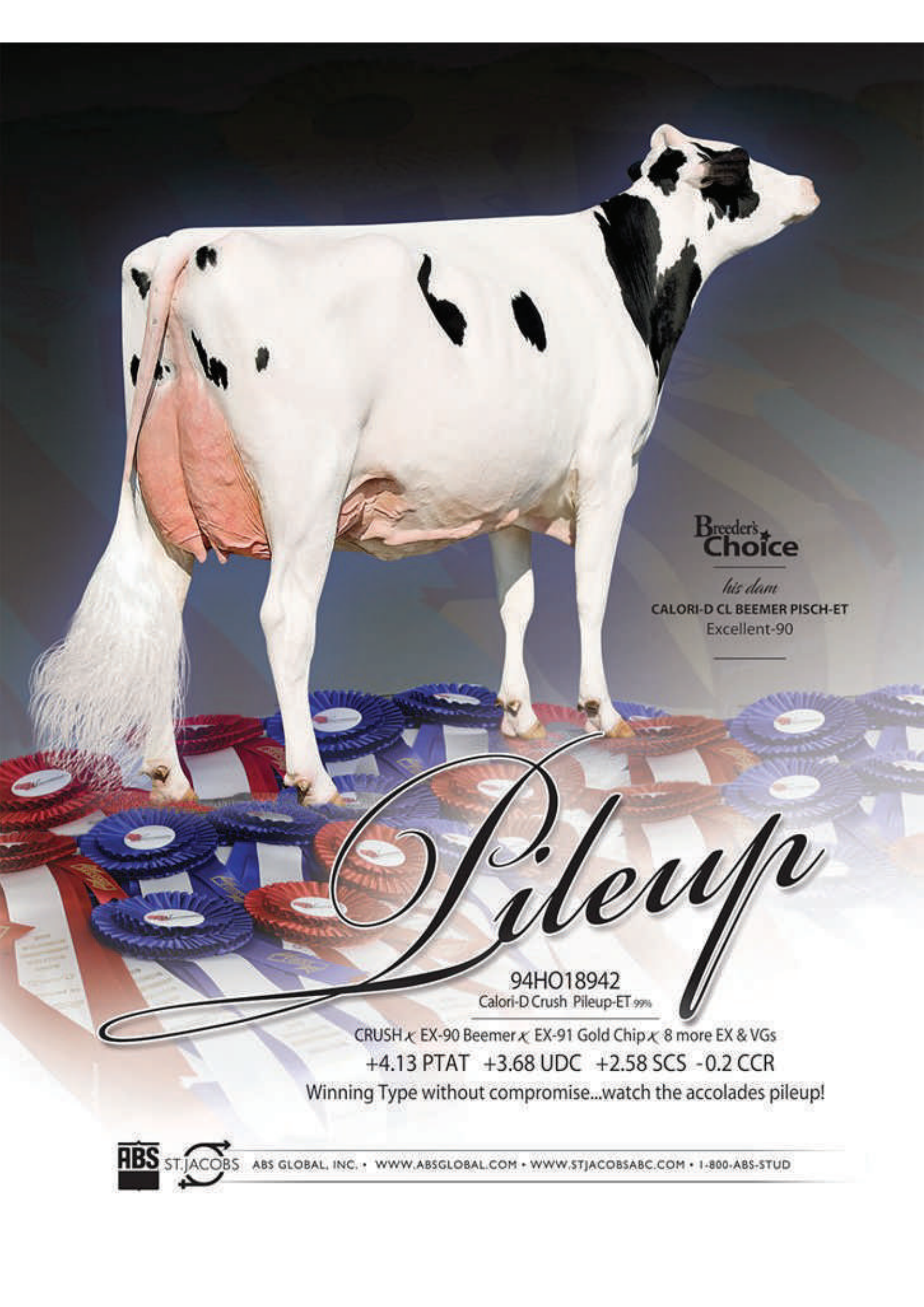
Recessives and Haplotypes

HH1T, HH2T, HH3T, HH4T, HH5T, HH6T, TC, TD, TL, TN, TR, TS, TV, TY

Conformation

Conf Dtrs: 0 | Conf Herds: 0 | Conf Rel: 56%

	-2	-1	0	1	2	
Type					2.22	Excellent
Mammary					3.55	Excellent
Legs & Feet					1.68	Excellent
Stature					3.04	Tall
Chest Width					0.10	Wide
Body Depth					1.31	Deep
Angularity					1.92	Angular
Rump Angle					-1.48	High
Rump Width					2.52	Wide
Rear Legs					0.73	Sickle
Foot Angle					0.07	Steep
Fore Udder					3.81	Strong
Rear Udder					2.53	High
Udder Support					2.49	Strong
Udder Depth					3.61	Shallow
Front Teat PI					1.74	Close
Teat Length					-0.90	Short
Rear Teat PI					1.21	Close



Breeder's
Choice

his dam

CALORI-D CL BEEMER PISCH-ET
Excellent-90

Pileup

94HO18942

Calori-D Crush Pileup-ET 99%

CRUSH x EX-90 Beemer x EX-91 Gold Chip x 8 more EX & VGs
+4.13 PTAT +3.68 UDC +2.58 SCS -0.2 CCR

Winning Type without compromise...watch the accolades pileup!



ABS GLOBAL, INC. • WWW.ABSGLOBAL.COM • WWW.STJACOBSABC.COM • 1-800-ABS-STUD

RAINSTORM-RED HO5976 SHG RAINSTORM RED



Reg. Number: 005176304842

NAAB: 29H020006

Recessives: CD, HH1T, HH2T, HH3T, HH4T, HH5T, HH6T, RC, TD, TL, TN, TS, TV, TY

ARGO x RUBICON x AIKMAN



BULL: 29H020006 SHG RAINSTORM-RED

Production Source Date: 04/2020 | Source: AHDB

PLI: 596	64% Rel	ACI: 502
Dtrs: 0	Prod Herds: 0	
Milk: +592 Kgs	67% Rel	
Fat: +31.9 Kgs	+0.09%	Beta Casein: A1/A2
Pro: +23.8 Kgs	+0.05%	Kappa Casein: BB

Management Traits

Source Date: 04/2020 | Source: Holstein UK | Source: AHDB

Dtr Fert		7.6	Above Ave
Lifespan		0.0	Above Ave
DCE		-1.0	Easy
Maternal CE		1.0	Above Ave
SCC		-13	Improver
Mastitis		0	Non-Improver
Temperament		0.11	Above Ave
Milking Speed		0.31	Above Ave
Locomotion		1.13	Above Ave
Body Cond		-0.09	Below Ave
Maintenance		-1 Kgs	Reduced Size
TB Advantage		0.6	
AHI		110	

TransitionRight®



Conformation Source Date: 04/2020 | Source: Holstein UK

Conf Dtrs: 0	Conf Herds: 0	Conf Rel: 53
Type Merit		1.44 Excellent
Mammary		1.94 Excellent
Legs & Feet		0.71 Excellent
Stature		0.18 Tall
Chest Width		-0.25 Narrow
Body Depth		-0.71 Shallow
Angularity		0.30 Angular
Rump Angle		-1.42 High
Rump Width		0.98 Wide
Rear Legs		0.59 Sickle
Foot Angle		0.15 Steep
Fore Udder		1.06 Strong
Rear Udder		1.73 High
Udder Support		1.90 Strong
Udder Depth		1.19 Shallow
Front Teat PI		1.16 Close
Teat Length		0.32 Long
Rear Teat PI		1.57 Close

SHIMMER*RC HO5408 SCHREUR SHIMMER-ET



Reg. Number: 000715952043

NAAB: 29H017442

Recessives: HH1T, HH2T, HH3T, HH4T, HH5T, HH6T, RC, TC, TD, TL, TN, TV, TY

SALVATORE RC x RUBICON x CASHCOIN



BULL: 29H017442 Schreur SHIMMER*RC

Production Source Date: 04/2020 | Source: AHDB

PLI: 582	64% Rel	ACI: 414
Dtrs: 0	Prod Herds: 0	
Milk: +1102 Kgs	68% Rel	
Fat: +29.9 Kgs	-0.15%	Beta Casein: A1/A2
Pro: +28.6 Kgs	-0.08%	Kappa Casein: BE

Management Traits

Source Date: 04/2020 | Source: Holstein UK | Source: AHDB

Dtr Fert		2.8	Above Ave
Lifespan		0.0	Above Ave
DCE		0.5	Difficult
Maternal CE		0.7	Above Ave
SCC		-22	Improver
Mastitis		-2	Improver
Temperament		0.46	Above Ave
Milking Speed		0.12	Above Ave
Locomotion		2.47	Above Ave
Body Cond		-0.51	Below Ave
Maintenance		9 Kgs	Increased Size
TB Advantage		1.6	
AHI		104	

TransitionRight®



Conformation Source Date: 04/2020 | Source: Holstein UK

Conf Dtrs: 0	Conf Herds: 0	Conf Rel: 55
Type Merit		2.78 Excellent
Mammary		2.22 Excellent
Legs & Feet		2.42 Excellent
Stature		0.73 Tall
Chest Width		0.90 Wide
Body Depth		0.53 Deep
Angularity		1.71 Angular
Rump Angle		-1.28 High
Rump Width		0.11 Wide
Rear Legs		-0.11 Straight
Foot Angle		0.64 Steep
Fore Udder		1.78 Strong
Rear Udder		1.87 High
Udder Support		0.78 Strong
Udder Depth		0.99 Shallow
Front Teat PI		1.34 Close
Teat Length		0.12 Long
Rear Teat PI		0.73 Close

RUBELS-RED HO5660 HOOGERHORST DG OH RUBELS-RED



Reg. Number: 000679520401

NAAB: 29H017459

Recessives: HH1T, HH2T, HH3T, HH4T, HH5T, HH6T, RC, TC, TD, TL, TN, TS, TV, TY

ARGO x RUBICON x AIKMAN



BULL: 29H017459 Hoogerhorst DG OH RUBELS RED

Production Source Date: 04/2020 | Source: AHDB

PLI: 594	64% Rel	ACI: 447
Dtrs: 0	Prod Herds: 0	
Milk: +779 Kgs	67% Rel	
Fat: +39.1 Kgs	+0.09%	Beta Casein: A1/A2
Pro: +29.1 Kgs	+0.04%	Kappa Casein: BB

Management Traits

Source Date: 04/2020 | Source: Holstein UK | Source: AHDB

Dtr Fert		1.0	Above Ave
Lifespan		0.0	Above Ave
DCE		-0.7	Easy
Maternal CE		0.6	Above Ave
SCC		-14	Improver
Mastitis		-1	Improver
Temperament		0.41	Above Ave
Milking Speed		0.37	Above Ave
Locomotion		2.12	Above Ave
Body Cond		-1.15	Below Ave
Maintenance		10 Kgs	Increased Size
TB Advantage		0.2	
AHI		105	

TransitionRight®



Conformation Source Date: 04/2020 | Source: Holstein UK

Conf Dtrs: 0	Conf Herds: 0	Conf Rel: 53
Type Merit		2.55 Excellent
Mammary		2.08 Excellent
Legs & Feet		1.63 Excellent
Stature		0.81 Tall
Chest Width		1.02 Wide
Body Depth		1.02 Deep
Angularity		2.40 Angular
Rump Angle		0.31 Sloped
Rump Width		2.27 Wide
Rear Legs		2.10 Sickle
Foot Angle		-0.22 Low
Fore Udder		1.50 Strong
Rear Udder		1.81 High
Udder Support		0.99 Strong
Udder Depth		0.81 Shallow
Front Teat PI		2.21 Close
Teat Length		0.10 Long
Rear Teat PI		1.00 Close